

Property of the Great Central Railway Society Archive Item No: L/310-2

GREAT CENTRAL RAILWAY

ATLANTIC TYPE ENGINES Nos 192 & 194

Walters Locomotive Co. Nos 4539 and 4540.

Drawing No. 63526

Maker's Order No. 9034.

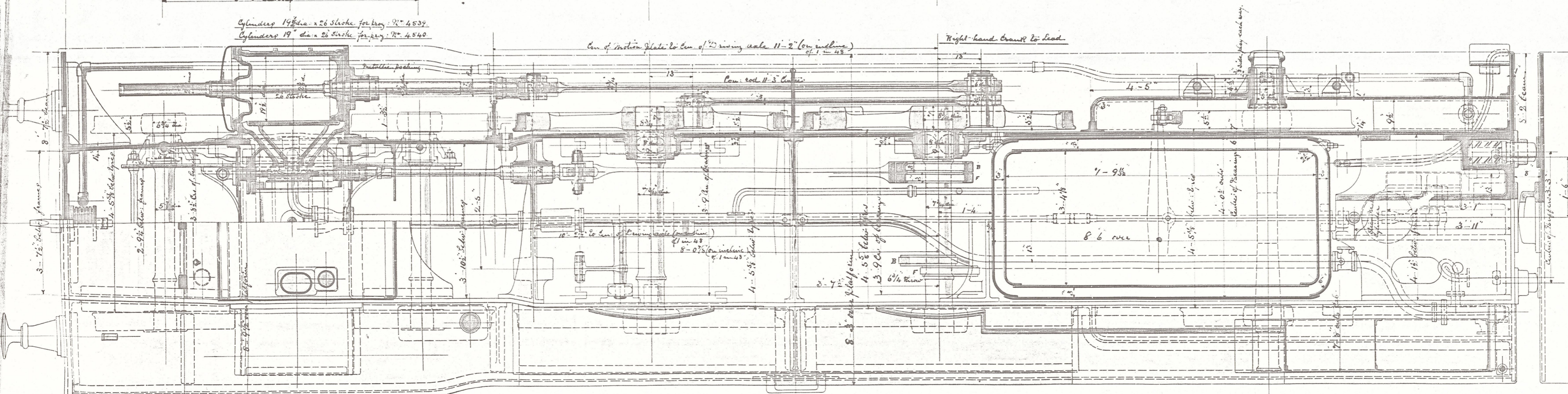
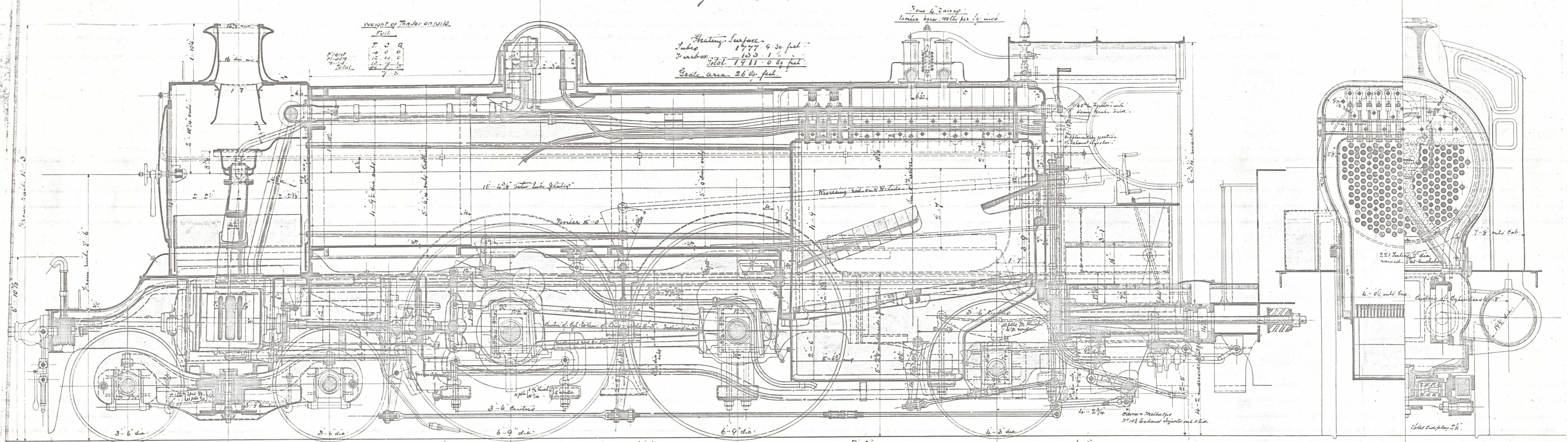
Weight of Engine on rails

	In working order	Empty
Engine	14 9 0	14 14 0
Front	15 7 0	16 15 0
Middle	15 12 0	16 5 0
Rear	15 7 0	14 5 0
Total	60 10 0	61 5 0

Weight of Tender on rails

	Full
Front	7 0 0
Middle	12 14 0
Rear	12 7 0
Total	31 8 0

Heating Surface -
 Tubes 1777 4.50 feet
 Firebox 133 1 10 feet
 Total 1911 0 80 feet
 Grate area 26 80 feet



Valve Motion
 Throw of Eccentrics 6 1/2"
 Clearance at top of link 3"
 " " " bottom 1/2"
 Angle of bar forward 104 1/2°
 " " backward 104 1/2°
 Clearance of Valve inside 32"
 Dip of Valve 1"
 Travel of Valve forward gear 1 1/2-3 1/2"
 " " " backward 1 1/2-3 1/2"

Gear	Notch	Lead	Forward	Backward	Cut-off
1	1	3/8"	1/2"	1/2"	1/2"
2	2	3/4"	1/2"	1/2"	1/2"
3	3	3/4"	1/2"	1/2"	1/2"
4	4	3/4"	1/2"	1/2"	1/2"
5	5	3/4"	1/2"	1/2"	1/2"
6	6	3/4"	1/2"	1/2"	1/2"
7	7	3/4"	1/2"	1/2"	1/2"
8	8	3/4"	1/2"	1/2"	1/2"
9	9	3/4"	1/2"	1/2"	1/2"
10	10	3/4"	1/2"	1/2"	1/2"

Scale 1" = 1 foot

12455